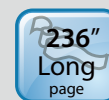
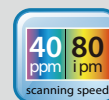




A Compact and Affordable Duplex Scanner



Features:

- AV332U scans 40 ppm/ 80 ipm at (A4, Color, 200 dpi)
- AV332U scans 32 ppm/ 64 ipm at (A4, Color, 300 dpi)
- Easy to carry due to the slim design
- Support embossed plastic cards
- Professional bundled software applications include Avision Button Manager V2, AVScan X, PaperPort SE 14
- Earth-friendly LED technology
- Compact ADF holds up to 50 pages
- Press and scan to cloud servers such as Google Drive, FTP, Evernote, and Microsoft SharePoint via Button Manager V2

Overview

The AV332U is a 32ppm/ 64ipm, duplex sheetfed scanner that is fast, reliable, and affordable for business where scanning plastic ID cards, business cards, documents or other heavy card stock is necessary. With the straight paper path, the scanner supports paper from 27-413 g/m² (7 ~ 110 lb) in weight and in 8.5 x 14 in. (legal) in size and allow embossed plastic cards such as credit cards, or driver's license up to 1.25 mm thick to be transmitted smoothly. Ultrasonic multi-feed detection assures you that not a single page of your documents will be lost.

Optical Resolution of 600 dpi

With optical resolution of 600 dpi and advanced image processing technology, you can be assured documents can be converted in the highest image quality. In addition, with the build-in CIS (Contact Image Sensor) module, the AV332U does not require any warm-up time.

Innovative Design to Save Your Space

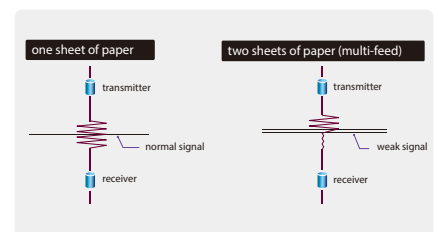
The AV332U boasts a unique and stylish design as both the input and output paper tray can be folded when not in use. The paper tray also helps to protect the unit from dust. Unlike bulky conventional scanners, the slim AV332U can be easily carried and fit on a desk without taking up a lot of space.

Compact and earth-friendly design

The AV332U is compact and earth-friendly in design since it uses CIS (contact image sensor) technology which requires smaller space and the LED lamp as the light source. The LED lamps are lower power consumption and are designed to last for the life of the scanner.

Ultrasonic Multi-Feed Detection

With the built-in ultrasonic multi-feed detection capability, the scanner allows you to set overlapped paper by detecting paper thickness between document. When multi-feed is detected a warning message will be prompted.



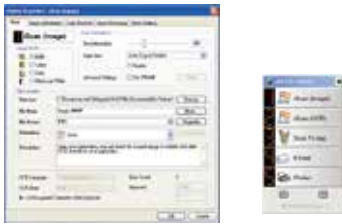
What We Have Bundled

The AV332U comes with TWAIN and ISIS drivers, and are bundled with a suite of powerful software applications that include Avision Button Manager V2, AVScan X and Nuance PaperPort SE 14.

Avision | AV332U Sheetfed Scanner

Avision's Button Manager V2

-Completes your scan with a single step



The Button Manager V2 main screen

Button Manager V2 makes it easy for you to scan and send your image to your favorite destinations with a press one button. Now the new version comes with an innovative feature to let you scan and automatically upload the scanned document to popular cloud repositories such as Google Docs, Microsoft SharePoint, or FTP. In addition, the iScan feature allows you to insert the scanned image or recognized text after optional OCR (Optical Character Recognition) process to your text editor such as Microsoft Word to get your job done easily and quickly.

AVScan X

-The Intelligent Document Management Tool



The AVScan X main screen

Document Imaging is the very first step of Document Management. However, poor quality images can cause serious problems to later indexing or storing processes. It may increase scanning labor costs and lowers the OCR accuracy. AVScan X ensures all documents are checked and polished at the time they are scanned such that the image quality is guaranteed before they are ready to use for other purposes.

AVScan X is an intelligent scanning and electronic filing solution. AVScan X possesses distinct features that convert and index scanned information into electronic documents for easy storage and fast retrieval.

Nuance PaperPort SE14

- The Professional Choice to Organize and Share Your Documents



The PaperPort SE14 main screen

PaperPort SE 14 is Nuance's most popular scanning and document management solution, carefully designed specifically for home office use. Part traditional file cabinet, part digital-document desktop, PaperPort SE 14 is the fastest and easiest way to scan, share, search and organize your documents. Additionally, PaperPort SE 14 now delivers anytime-anywhere access to your most important files however it's convenient for you – using a PC, Mac, iPhone, iPad, or Android device.



PAPERPORT SE 14



Avison
Button Manager V2

AVScan X



Avison AV332U Product Specifications

Paper Feeding:	ADF 50-page capacity
Scanning Technology:	Contact Image Sensor (CIS)
Light Source:	LED
ID card thickness:	Up to 1.25 mm
Long Page Mode:	200 dpi: 6000 mm (236 in.) 300 dpi: 5540 mm (218 in.) 600 dpi: 1500 mm (59 in.)
Scanning Size:	Max. 216 x 356 mm (Legal) (8.5 x 14 in) Min. 52 x 74 mm (2.0 x 2.9 in)
Scanning Speed:	40 PPM/ 80 IPM (BW, A4, 300 dpi) 40 PPM/ 80 IPM (color, A4, 200 dpi) 32 PPM/ 64 IPM (color, A4, 300 dpi)
Paper Thickness:	27~413 g/m ² (7 ~ 110 lb)
Optical Resolution:	600 dpi
Output Resolution:	75, 100, 150, 200, 300, 400, 600 and 1200 dpi
Halftone Patterns:	Dither and Error Diffusion
Grayscale mode:	16-bit input 8-bit output
Color mode:	48-bit input 24-bit output
File Formats:	BMP, PNG, GIF, JPEG, PDF, Searchable PDF Multi-Page TIFF, TIFF, RTF, TXT, XPS, DOC, XLS, PPT, DOCX, XLSX, PPTX, HTML.
Bundled Software:	Avison Button Manager V2, Avison AVScan X Nuance PaperPort SE 14
Interface/Drivers:	USB 2.0 / TWAIN , ISIS , WIA
Power Supply:	Input: 100~240 VAC, 50/60 Hz Output: 24V, 1.5A
Power Consumption:	Operation: 15W Sleep: 1.6 W Ready: 6W Off: 0.27 W
Environmental Factors:	Operating temperature: 10°C to 35°C (50°F to 95°F) Operating humidity: 10% to 85%
Acoustic Noise:	Standby: <25 dB Operating: <55 dB
Maximum (WxDxH):	282 x 457 x 334 mm
Minimum (WxDxH):	282 x 152 x 165 mm
Weight:	2.5 kg(5.5lb.)
Recommended Daily Duty Cycle:	up to 5,000 Sheets
Multi-feed Detection:	Ultrasonic Sensor

Specifications subject to change without notice.

We have endeavored to ensure that the information in this manual is accurate and that Avison is not responsible for printing or typographical errors. The above configuration is for reference only. The actual configuration (software, hardware) should be complied with the specification described in the purchase agreement. Avison Inc. owns the intellectual property rights of the product outlook and design and the product outlook and design are subject to change. Avison reserves the right to the interpretation of the product description. Avison, Inc. All rights reserved. Other company and product names mentioned in this document are trademarks of their respective companies. Wherein the third party product is for reference only and Avison does not warrant these products nor is responsible for the efficiency or use of these products.

System Requirements

CPU:	Intel® Core i3 (2.1GHz) or Higher
Memory:	2GB (32bit Windows) 4GB (64bit Windows)
DVD-ROM:	DVD ROM Drive
USB:	USB 2.0
Windows Operating System:	Windows 11, 10, 8.x, 7 (32 & 64 bit)

Contents

Scanner
Power Supply
Quick Guide
USB 2.0 Cable
CD-ROM includes:
-Scanner Driver (TWAIN/ISIS Driver)
-Avison Button Manager V2
-Avison AVScan X
-Nuance PaperPort SE 14



Avison
www.avision.com